

# ***PCOR Partnership Outreach – Over a Decade of Activity***

**10th CO2GeoNet Open Forum  
Venice, Italy  
May 11–12, 2015**

**Charles Gorecki  
Senior Research Manager**

**with Dan Daly, Charlene Crocker, Janet Crossland, Edward Steadman, and John Harju**



**Energy & Environmental Research Center (EERC)**

# Regional Carbon Sequestration Partnership Program





# Many Projects and Many Players



Zama

Fort Nelson

Quest

Weyburn-Midale

Boundary Dam

Aquistore

Lignite

Northwest McGregor

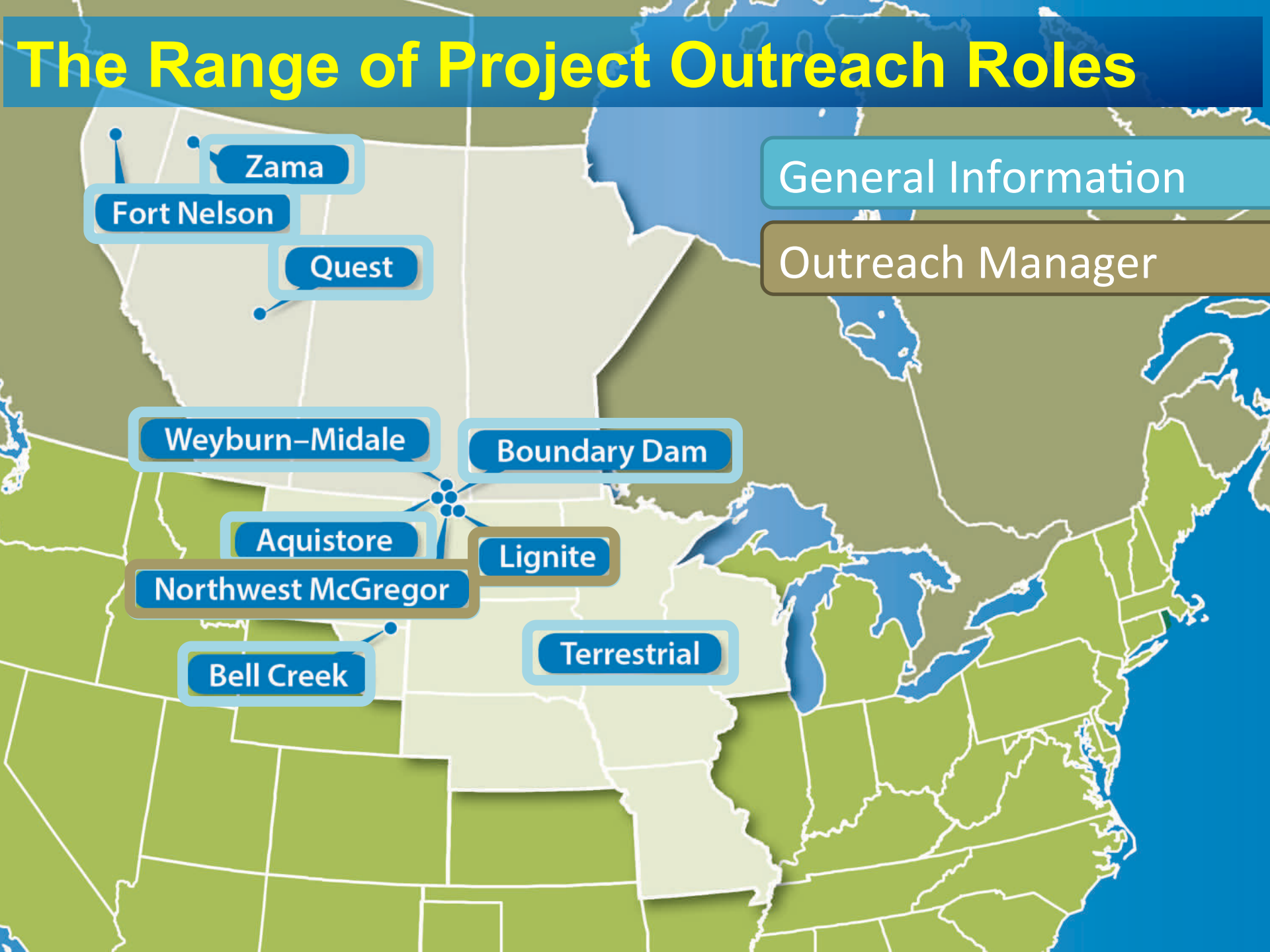
Bell Creek

Terrestrial

# The Range of Project Outreach Roles







# The Range of Project Outreach Roles

General Information

Outreach Manager

Zama

Fort Nelson

Quest

Weyburn-Midale

Boundary Dam

Aquistore

Northwest McGregor

Lignite

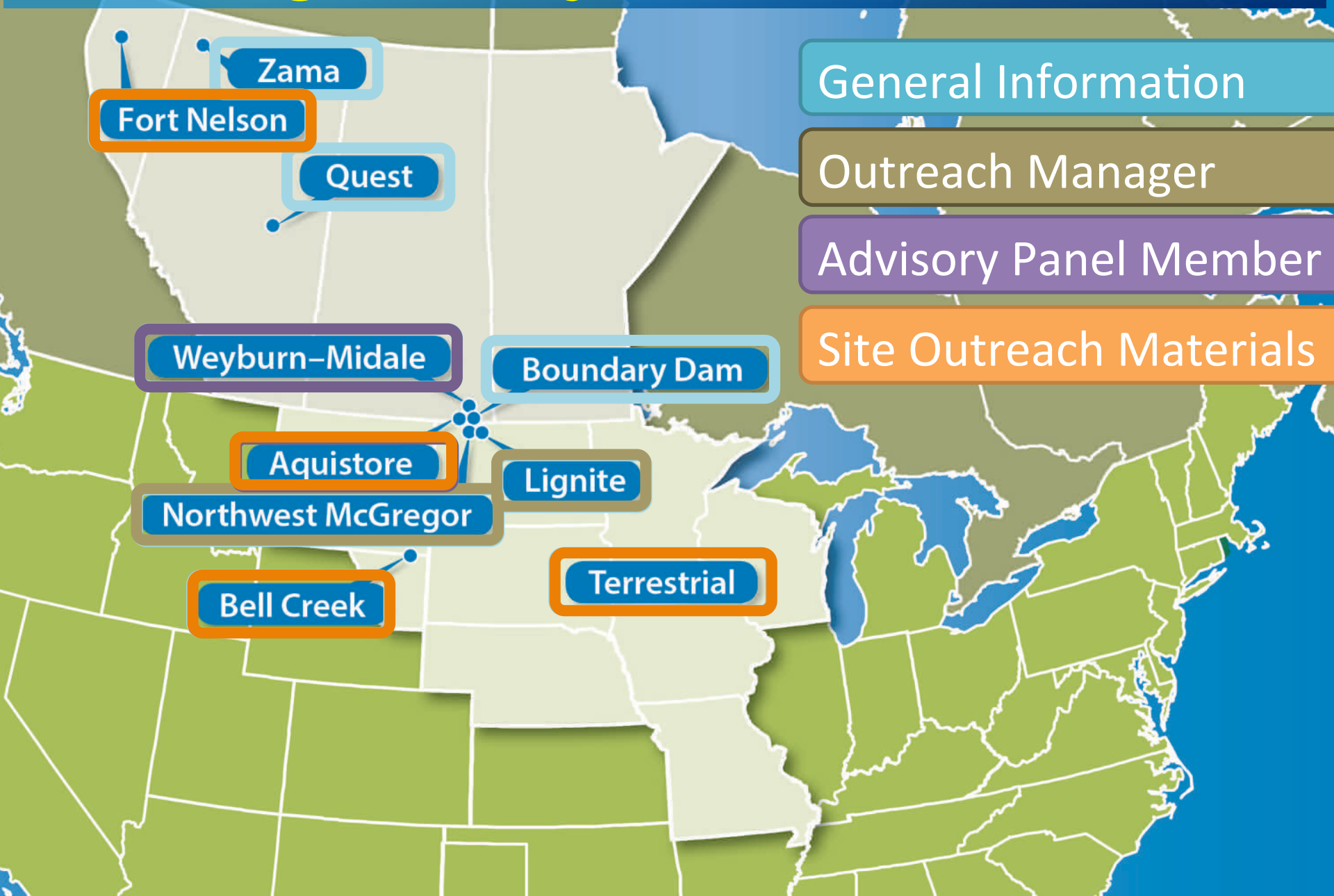
Bell Creek

Terrestrial

# The Range of Project Outreach Roles



# The Range of Project Outreach Roles





# All Team Members Have a Role in Outreach



Media Relations



# All Team Members Have a Role in Outreach



Educator Liaison



# All Team Members Have a Role in Outreach



Stakeholder Relations



# All Team Members Have a Role in Outreach

Landowner Relations



# And They Need to Play Their Role

## Stakeholder Relations



## Media Relations



## Landowner Relations



## Educator Liaison



# Match the Approach to the Audience

**Public  
Outreach**

**Project**

## Information Dissemination Methods

Public Web site

Decision maker sessions

Community information sessions

Project-specific materials

Project outreach advisory groups



# Bell Creek CO<sub>2</sub> EOR Project

Enhance  
Existing Project Efforts

Denbury 

  
PCOR  
Partnership



# Provide Project Specific Materials





# That Help Project Partners Tell Their Story





# Water and Soil Gas Monitoring

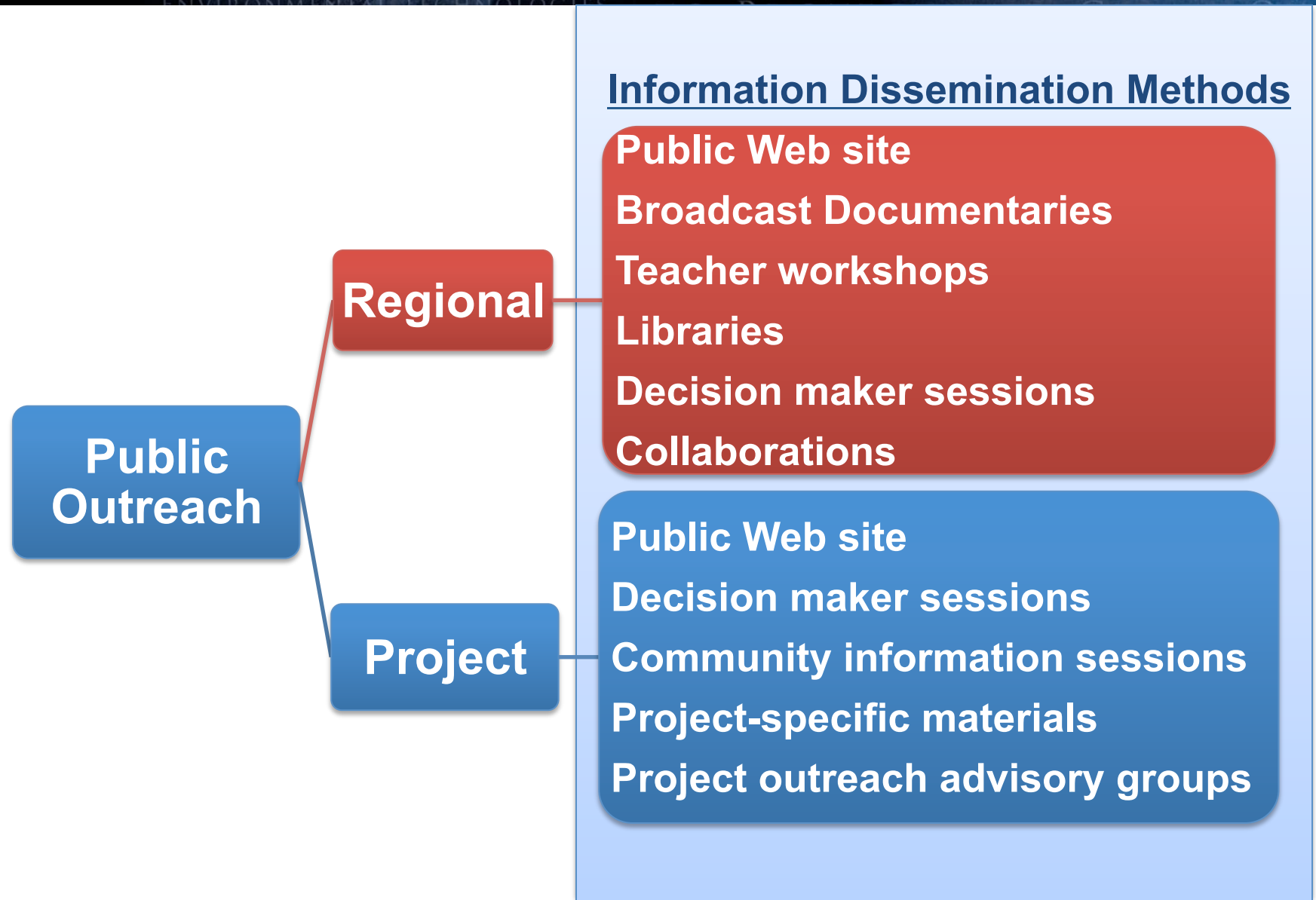




# Landowner Outreach



# Go Beyond the Project





# Make Products to Fit Audiences



Plains CO<sub>2</sub> Reduction (PCOR) Partnership

## ATLAS

4th Edition



### Nature in the Balance CO<sub>2</sub> Sequestration

### Reducing Our Carbon Footprint The Role of Markets

### Out of the Air – Into the Soil Land Practices That Reduce Atmospheric Carbon Levels

## Reducing Greenhouse Gas Emissions Energy with a Smaller Carbon Footprint

Safely Storing Carbon and Producing More Oil (CO<sub>2</sub>-enhanced oil recovery)

Safely Storing Carbon (carbon capture and storage)



### Managing Carbon Dioxide The Geologic Solution

### Global Energy and Carbon Tracking Our Footprint

### Fact Sheet Geologic Storage of Sour CO<sub>2</sub> from a Natural Gas-Processing Plant – A Proposed Commercial Demonstration

### Fact Sheet Carbon Management Planning Prospectus

### Fact Sheet What is the PCOR Partnership?

### Fact Sheet What is a Carbon Management Plan?

### Fact Sheet The PCOR Partnership consists of a diverse group of stakeholders in together to better understand the technical and economic feasibility capturing and storing CO<sub>2</sub> emissions from stationary sources of CO<sub>2</sub> central source of North Dakota.

[www.undeerc.org/PCOR](http://www.undeerc.org/PCOR)



# Get Feedback

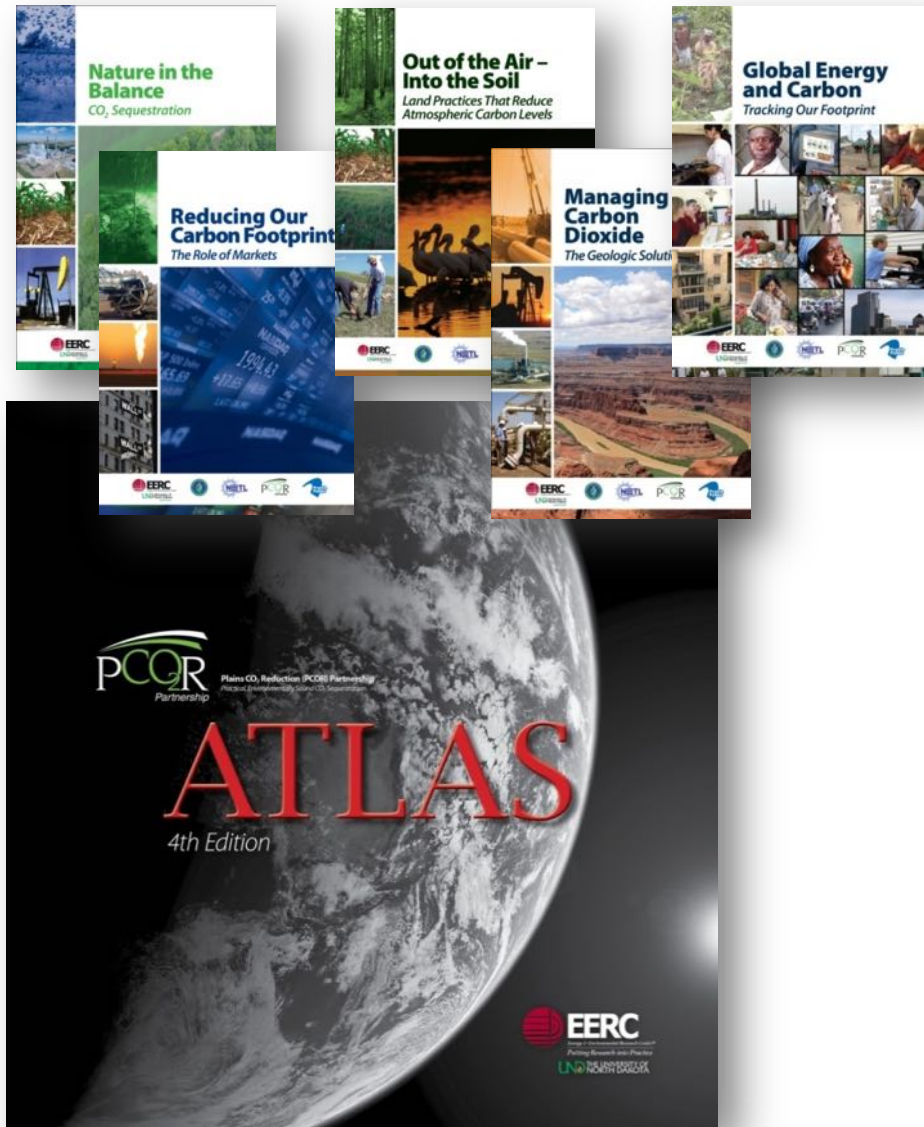
- Technical peer review
  - Internal
  - External/Technical Advisory Board
- Master teachers collaborations and focus group
- Public focus groups

Feedback improves  
information dissemination!



# Track the Effort

- 750 Broadcasts on public television
- 213 libraries in 7 states and Alberta, CA
- 1205 teachers in 8 states





# 10,000 Visits in FY2014



## Plains CO<sub>2</sub> Reduction (PCOR) Partnership

Practical, Environmentally Sound CO<sub>2</sub> Sequestration

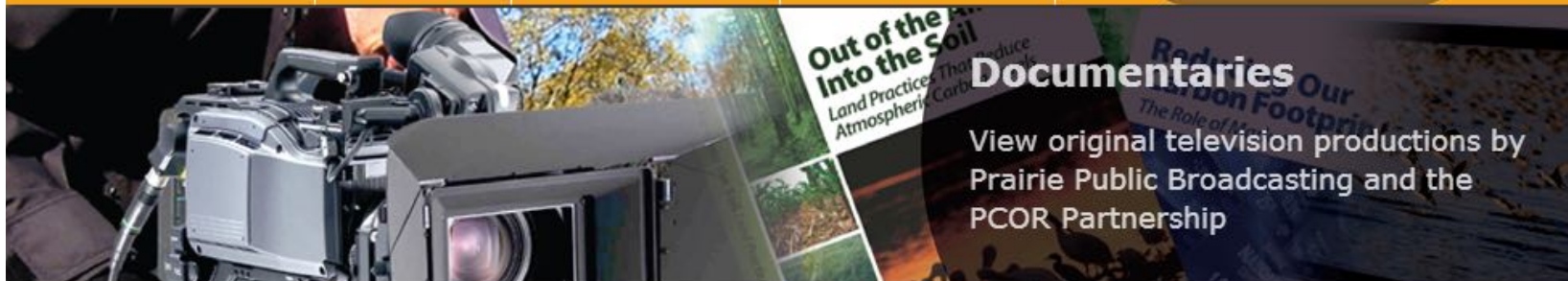
PARTNERS ONLY

KIDS

EDUCATORS

CONTACT US

search



### Documentaries

View original television productions by Prairie Public Broadcasting and the PCOR Partnership

About the Partnership

Carbon Sequestration, Climate Change and CO<sub>2</sub>

CO<sub>2</sub> and Storage in the Region

CO<sub>2</sub> Sequestration Projects

News and Publications

Documentaries

**Carbon dioxide (CO<sub>2</sub>) sequestration**, the long-term storage of CO<sub>2</sub> either in geologic zones deep underground or at the earth's surface in plants and soils, is emerging as a major strategy to help address climate change concerns. But to be successful, CO<sub>2</sub> sequestration projects need to take regional characteristics into account.

**The Plains CO<sub>2</sub> Reduction (PCOR) Partnership** is a collaboration of over 80 U.S. and Canadian stakeholders that is laying the groundwork for practical and environmentally sound CO<sub>2</sub>

### PCOR Partnership Features:

#### DOE Techlines

**DOE-Sponsored Field Test Finds Potential for Permanent Storage of CO<sub>2</sub> in Lignite Seams**

**DOE Regional Partnership Successfully Demonstrates Terrestrial CO<sub>2</sub> Storage Practices in Great Plains Region of U.S. and Canada**

#### Topical Report

**Factors Affecting the Potential for CO<sub>2</sub> Leakage from Geologic Sinks** (PDF)

# www.undeerc.org/PCOR

Links

**Bell Creek Integrated CO<sub>2</sub> EOR and Storage Project**



Bell Creek Integrated CO<sub>2</sub> EOR and Storage Project

**seven regional partnerships** under the U.S. Department of Energy (DOE) **National Energy Technology Laboratory's (NETL's) Regional Carbon Sequestration Partnership (RCSP) Program**. NETL and RCSP are part of DOE's Office of Fossil Energy.

### CO<sub>2</sub> Storage News

### PCOR Partnership Regional Atlas





# Contact Information

## **Energy & Environmental Research Center**

University of North Dakota

15 North 23rd Street, Stop 9018

Grand Forks, ND 58202-9018

World Wide Web: **[www.undeerc.org](http://www.undeerc.org)**

Telephone No. (701) 777-2822

Fax No. (701) 777-5181

**Charles Gorecki, Senior Research Manager**

**[cgorecki@undeerc.org](mailto:cgorecki@undeerc.org)**

## Acknowledgment

This material is based upon work supported by the U.S. Department of Energy National Energy Technology Laboratory under Award No. DE-FC26-08NT43291.

## Disclaimer

This presentation was prepared as an account of work sponsored by an agency of the United States Government. Neither the United States Government, nor any agency thereof, nor any of their employees, makes any warranty, express or implied, or assumes any legal liability or responsibility for the accuracy, completeness, or usefulness of any information, apparatus, product, or process disclosed or represents that its use would not infringe privately owned rights. Reference herein to any specific commercial product, process, or service by trade name, trademark, manufacturer, or otherwise does not necessarily constitute or imply its endorsement, recommendation, or favoring by the United States Government or any agency thereof. The views and opinions of authors expressed herein do not necessarily state or reflect those of the United States Government or any agency thereof.